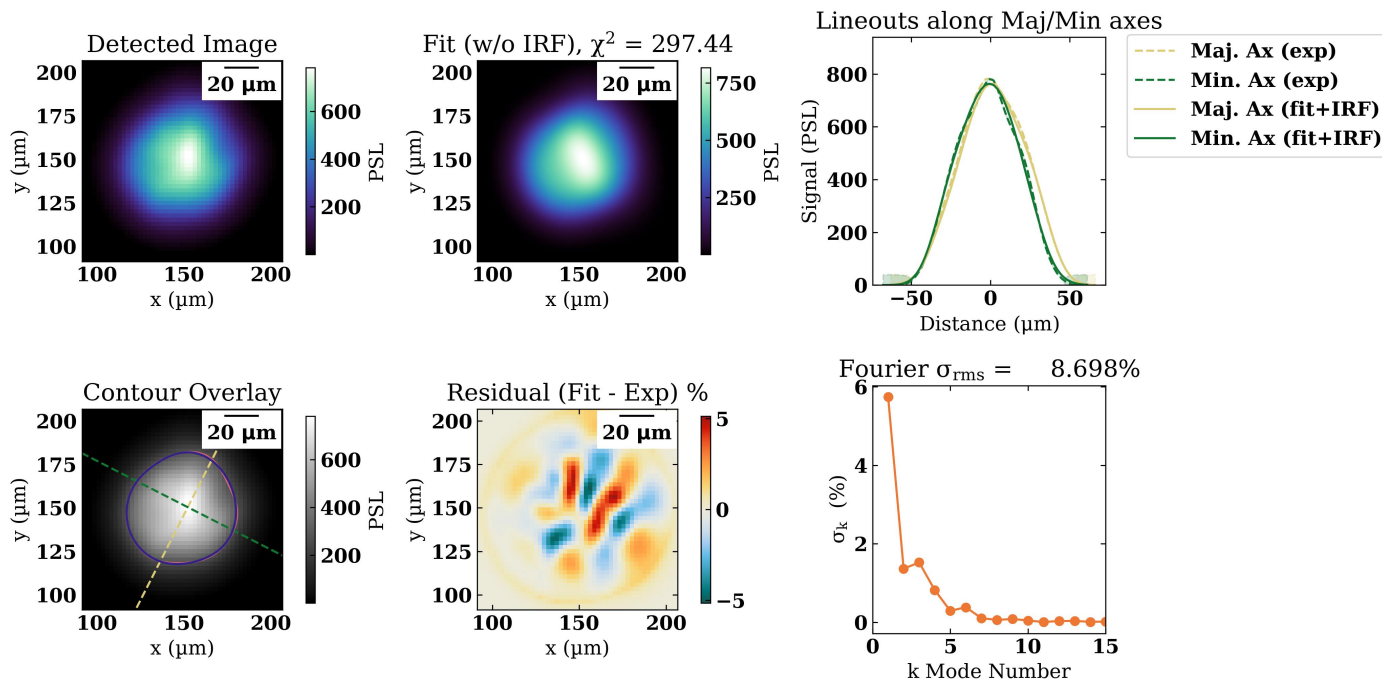


Results

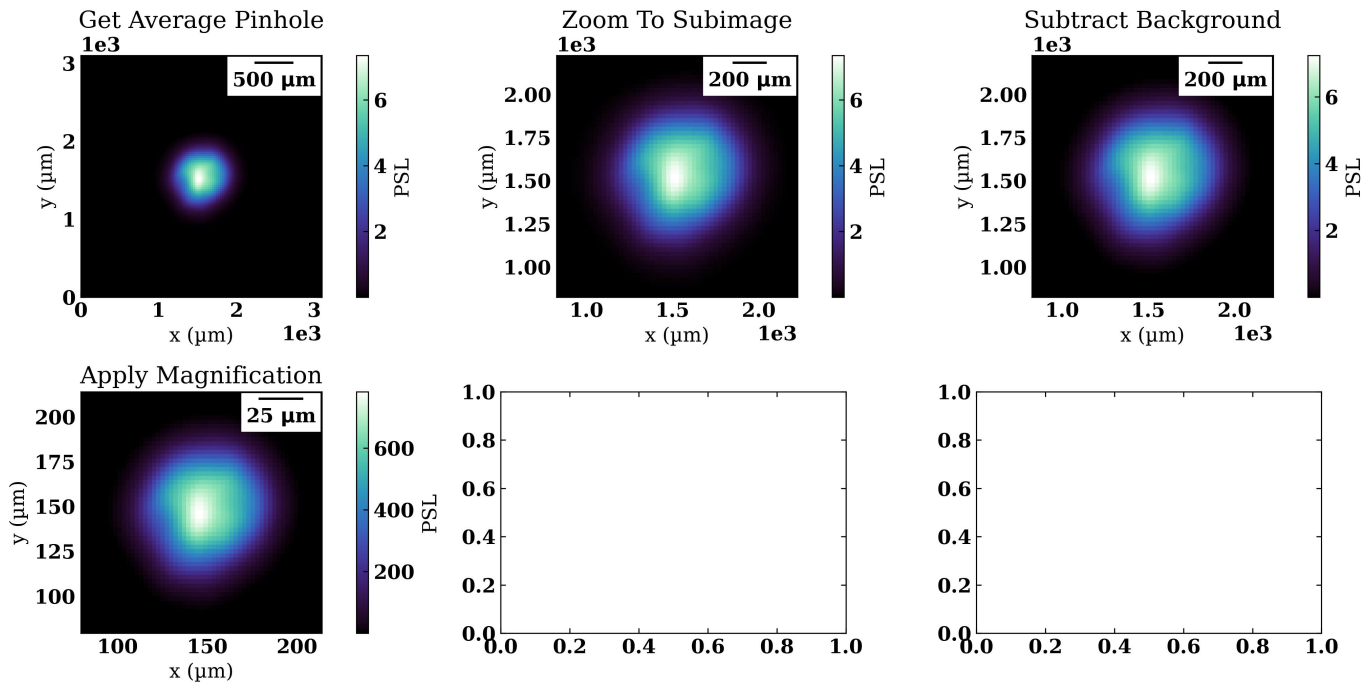
Parameter	Channel 1
Fit Metric	297
Amplitude	817 ± 0.199 PSL
Axial Ratio	1.08 ± 0.000175
Core Offset	3.79 ± 0.00328
L1 Angle	-2.75 ± 0.0016
L2 Angle	-2.04 ± 0.00242 rad
Major Axis	31.4 ± 0.00391 μm
Minor Axis	29.2 ± 0.0047 μm
Photon Yield	1.51e+04 ± 28.2 J
R0	30.4 ± 0.00336 μm
R17	37.3 ± 0.00281 μm
Supergaussian Exponent	2.33 ± 0.00113
X Center	152 ± 2.84e-14 μm
Y Center	150 ± 0.00609 μm

## TRXI IP 1 SG Fit

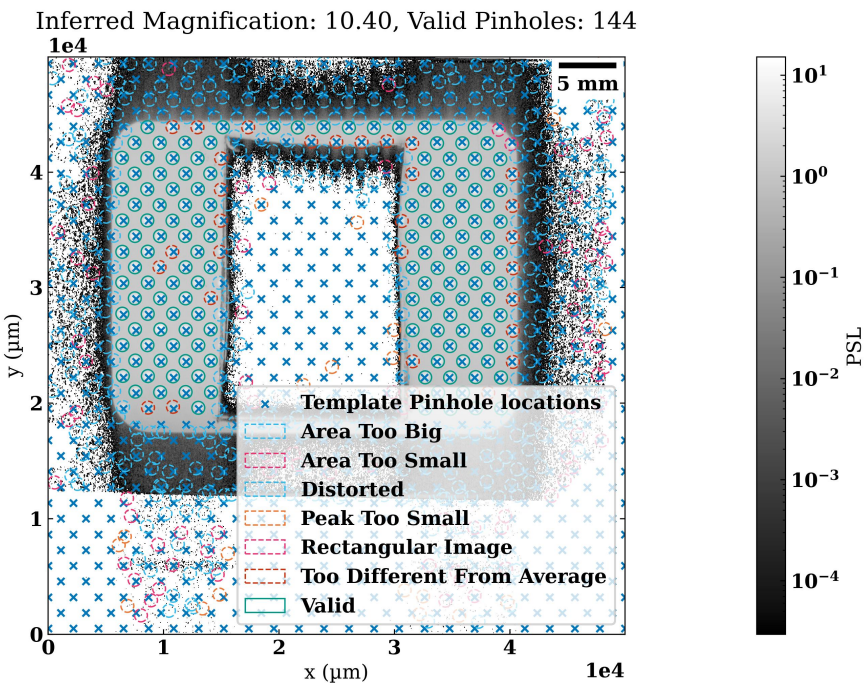


# TRXI IP 1

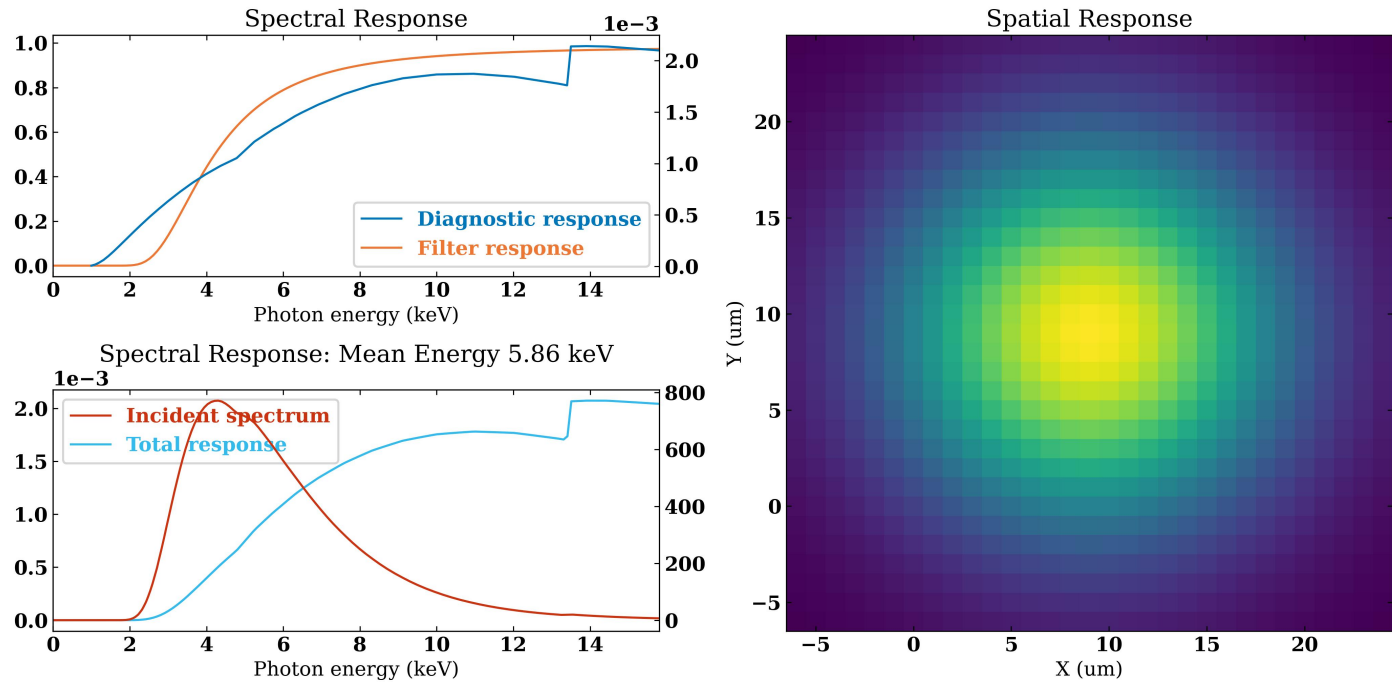
TRXI IP 1 Processing



# TRXI IP 1 Pinhole Locator Report



# TRXI IP 1 Response Functions



# TRXI IP 1 Fresnel Diffraction

Fresnel Diffraction for  $D = 5\text{ }\mu\text{m}$ ,  $M = 10.40$ ,  $R = 166\text{ mm}$

